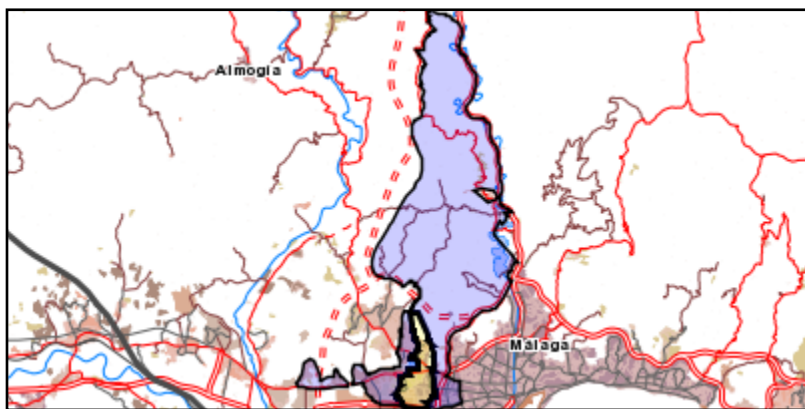




# Área de influencia escolar Málaga

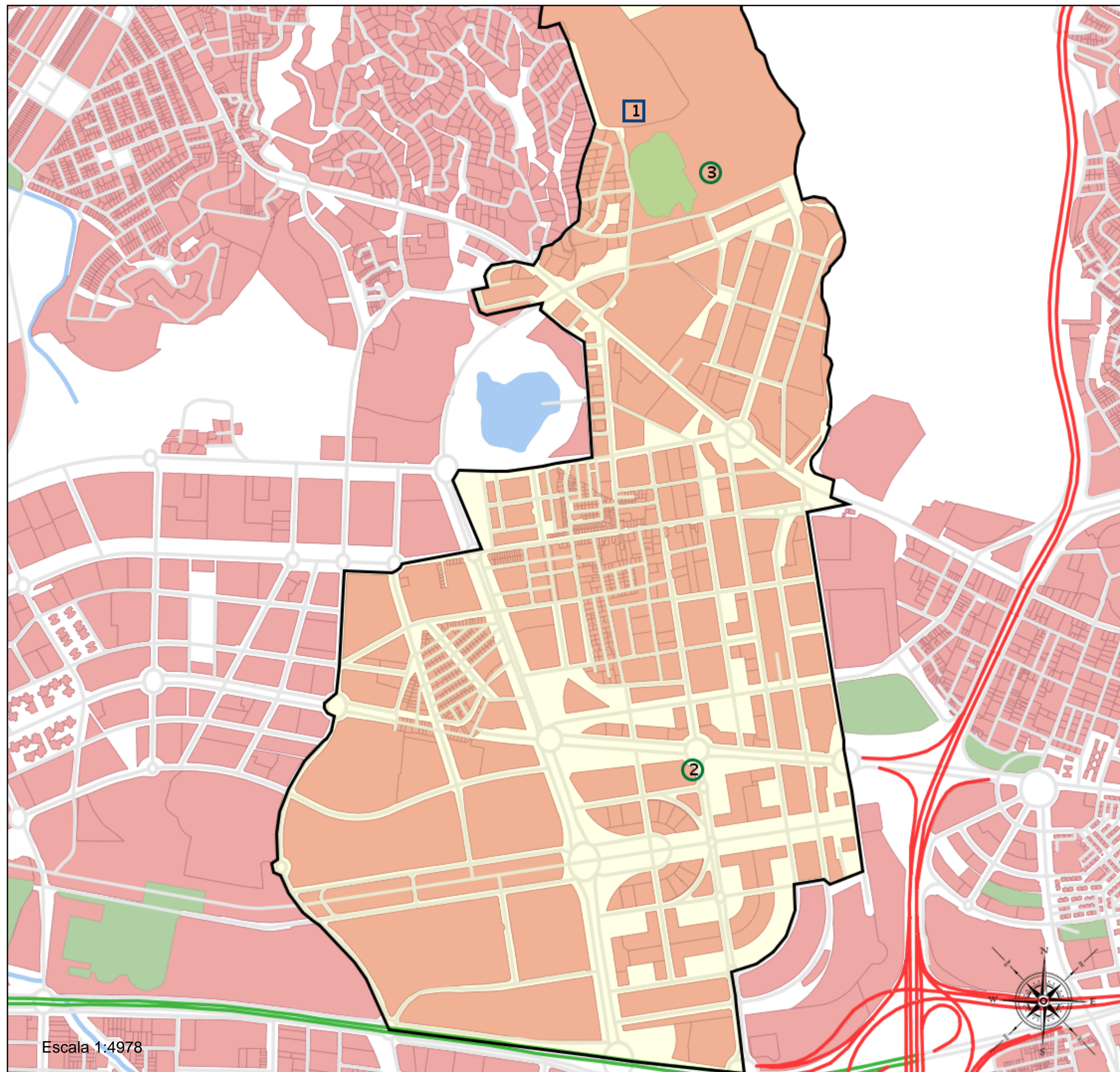
Málaga\_S\_23  
29067\_S\_23 (Secundaria)

- (1) 29004857 - C.D.P. Los Olivos
- (2) 29016264 - I.E.S. Teatinos
- (3) 29700242 - I.E.S. Núm. 1. Universidad Laboral



### Leyenda

-  Centros públicos
-  Centros concertados

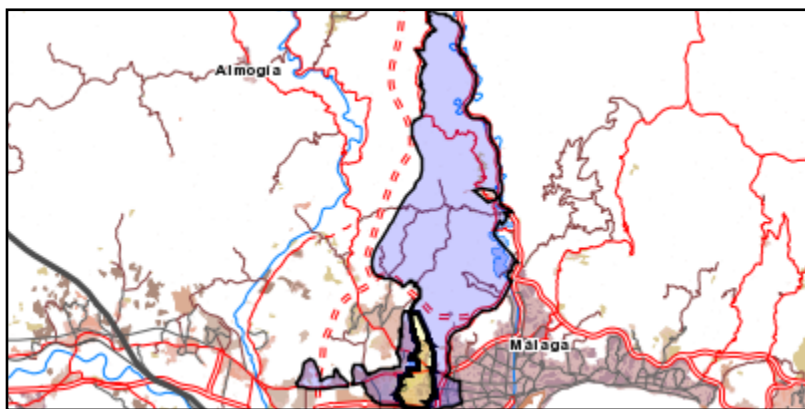


Escala 1:4978

# Área de influencia escolar Málaga

Málaga\_S\_23  
29067\_S\_23 (Secundaria)

- (1) 29004857 - C.D.P. Los Olivos
- (2) 29016264 - I.E.S. Teatinos
- (3) 29700242 - I.E.S. Núm. 1. Universidad Laboral



### Leyenda

- Centros públicos
- Centros concertados

